

Horsford Road, Brixton, SW2

2 bedroom flat - conversion for sale

£500,000

Share of Freehold

Property Details

An attractive and well-presented two double bedroom flat, arranged over the first floor of a handsome Victorian terraced house on the leafy and conveniently located Horsford Road. This property is attractive for a number of reasons, generous dimensions, endearing character and fantastic local amenities to name a few. The flat comprises a generous double bedroom, displaying an abundance of built-in storage space and a peaceful location at the rear of the property. Towards the front of the building, a large eat-in reception room, a second bedroom ideal for guests, as a nursery, a home office or indeed to rent out if desired. There is an attractive, fully equipped bathroom and a well-stocked kitchen with views over the gardens to the rear. The property benefits from generous natural light, teamed with endearing Victorian character true to the period in which it was built. High ceilings, a beautiful bay window in the reception and multiple sash windows all draw a beautiful atmosphere into the flat.

Features

- Two double bedrooms
- Victorian conversion
- Bright and airy
- Highly desirable street
- 8 minute walk to central Brixton
- Moments from Brockwell Park
- Fantastic local amenities on Brixton Hill
- Share of Freehold
- Chain free

Council tax band C EPC rating (null)



Horsford Road, Brixton, SW2



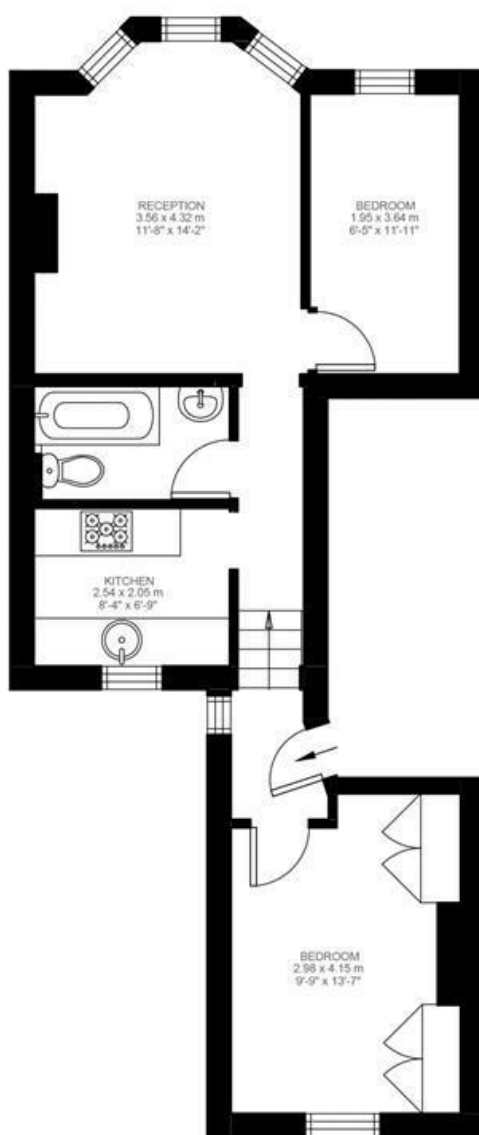
2 Bedroom Flat

Approx internal area:

534 sqft 50 sqm

While we do try our very best, floor plans are produced as a guide only and we take no responsibility for the precise accuracy with which any property is represented

Horsford Road



First Floor



Horsford Road, Brixton, SW2

